

Gasparilla Island Bridge Authority

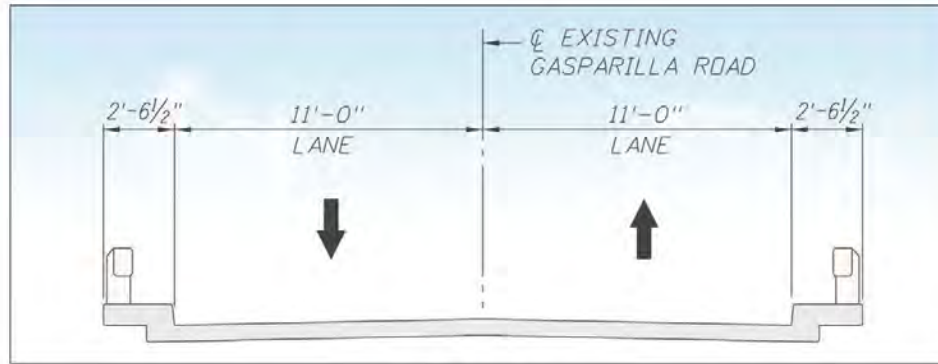
Design Update for the South and Center Bridges

March 25, 2011

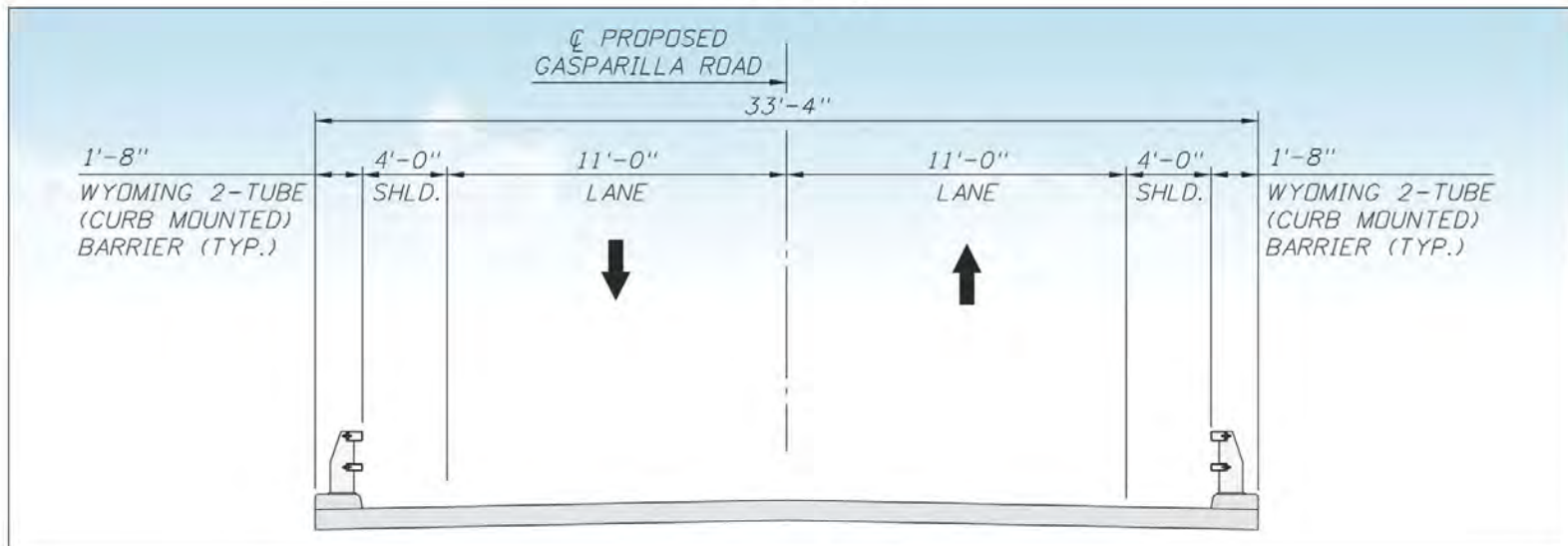




Center Bridge



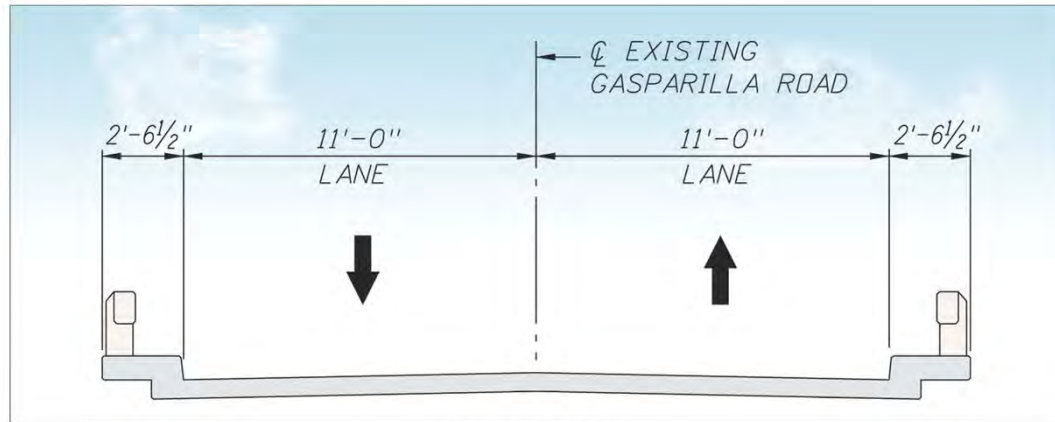
Existing



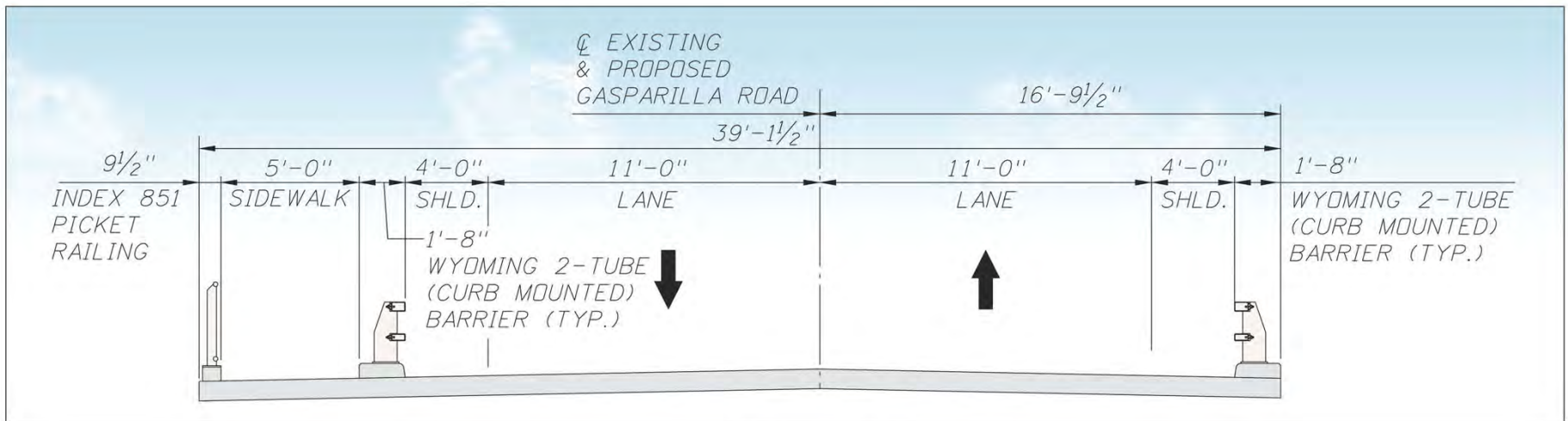
Proposed



South Bridge



Existing



Proposed

Center Bridge – Existing and Proposed



Existing vertical clearance = 15 feet

Proposed vertical clearance = 26 feet

South Bridge – Existing and Proposed



Existing vertical clearance = 7 feet

Proposed vertical clearance = 16 feet

View of South Bridge Pedestrian Railing



View of South Bridge Pedestrian Railing



View of South Bridge



South Bridge Traffic Diversion

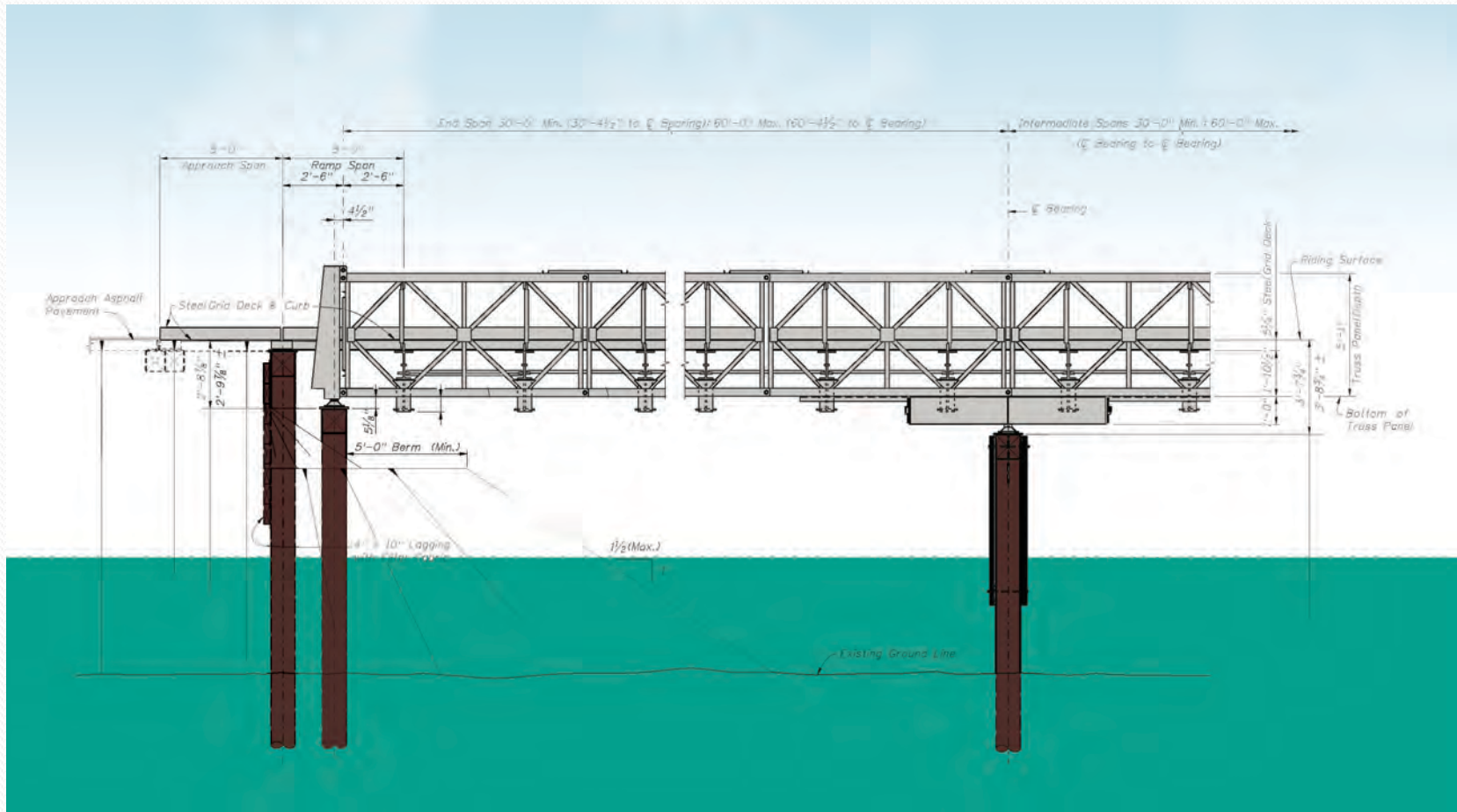


Temporary Bridge

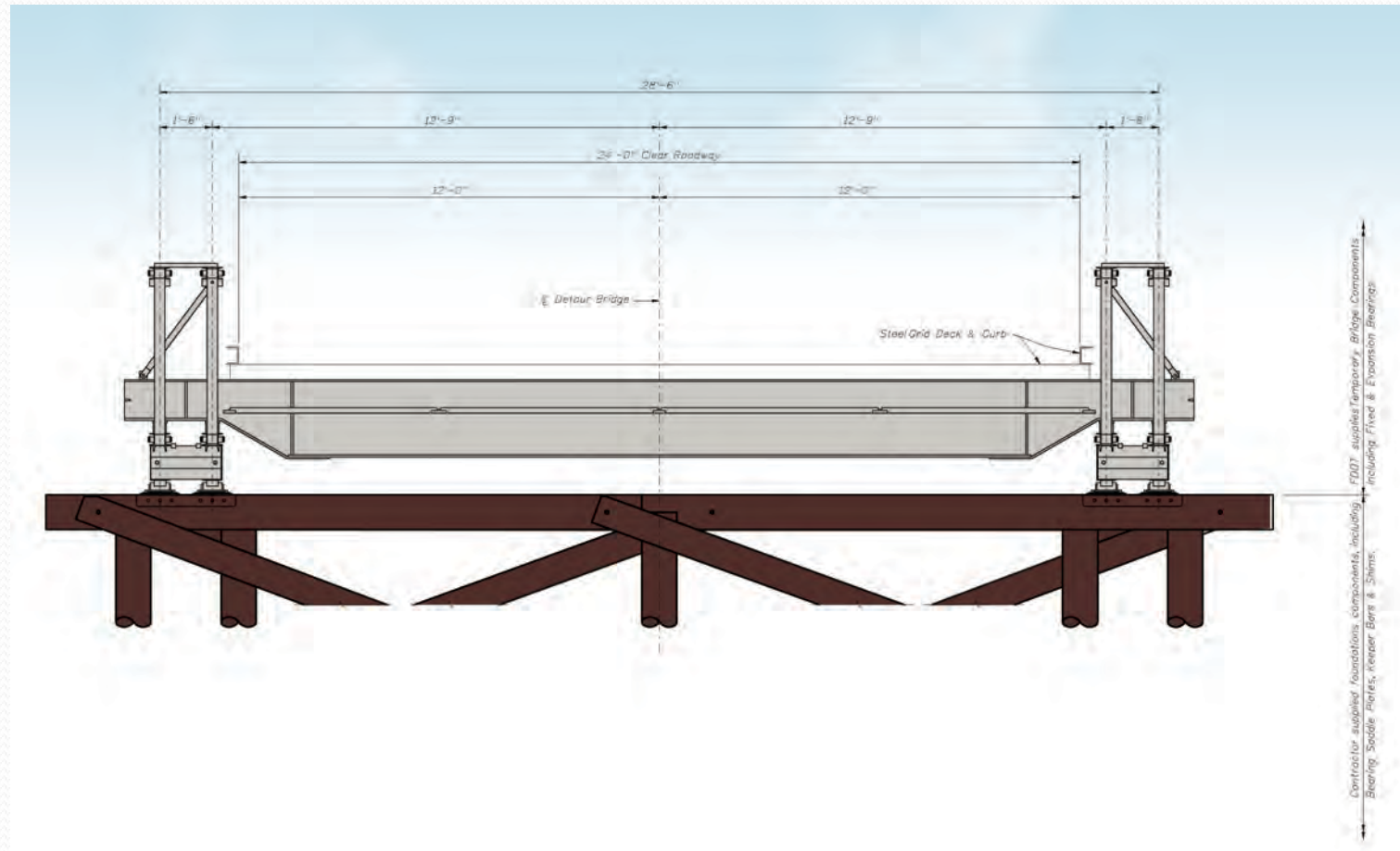
- Temporary bridge will be in place for about 12-16 months
- Bridge will be closed to pedestrian traffic
- Bridge will accommodate two lanes of traffic (two – 12' lanes)



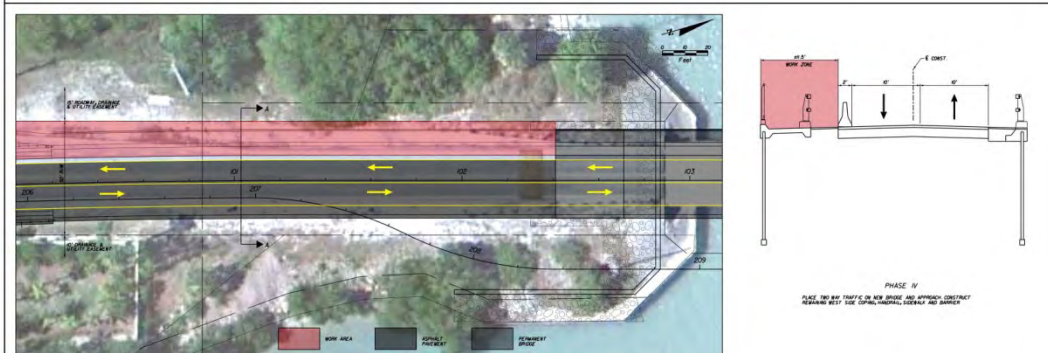
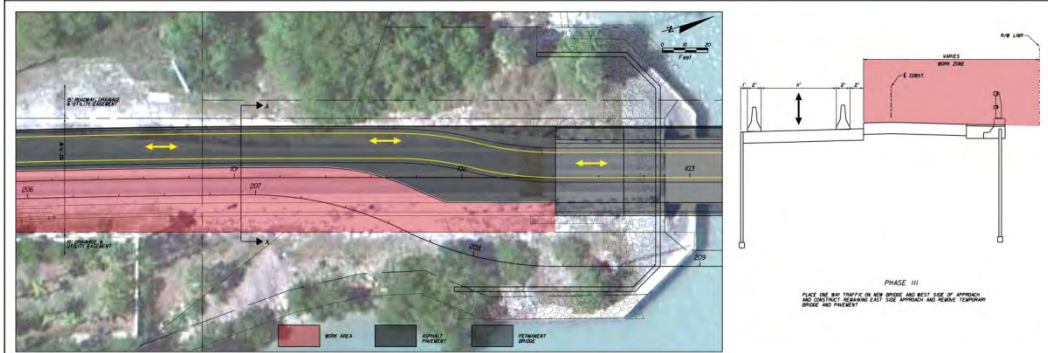
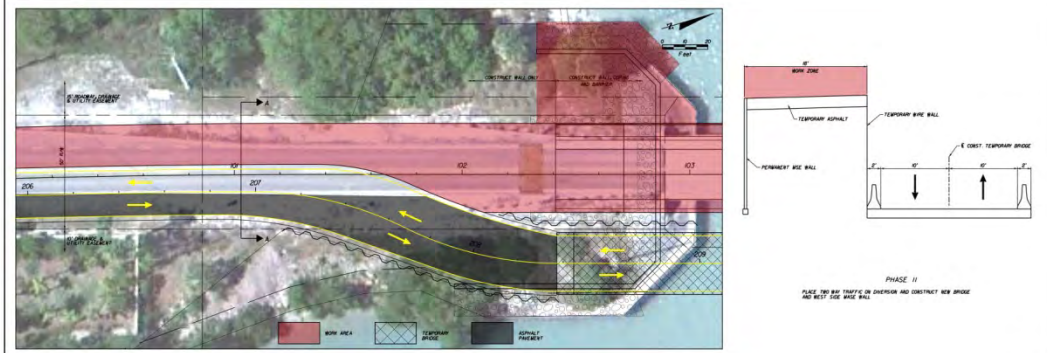
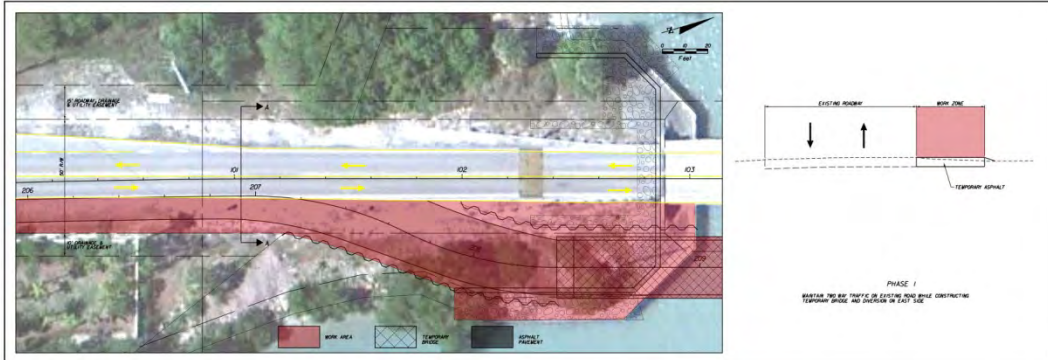
Temporary Bridge Side View



Temporary Bridge Cross Section



South Bridge Maintenance of Traffic



Pond Sites

